

RioTinto

Rio Tinto Overview



Agenda

Welcome

What's In a Name & Org Structure

About Rio Tinto

Health Safety and Environment

Rio Tinto

Welcome to Rio Tinto

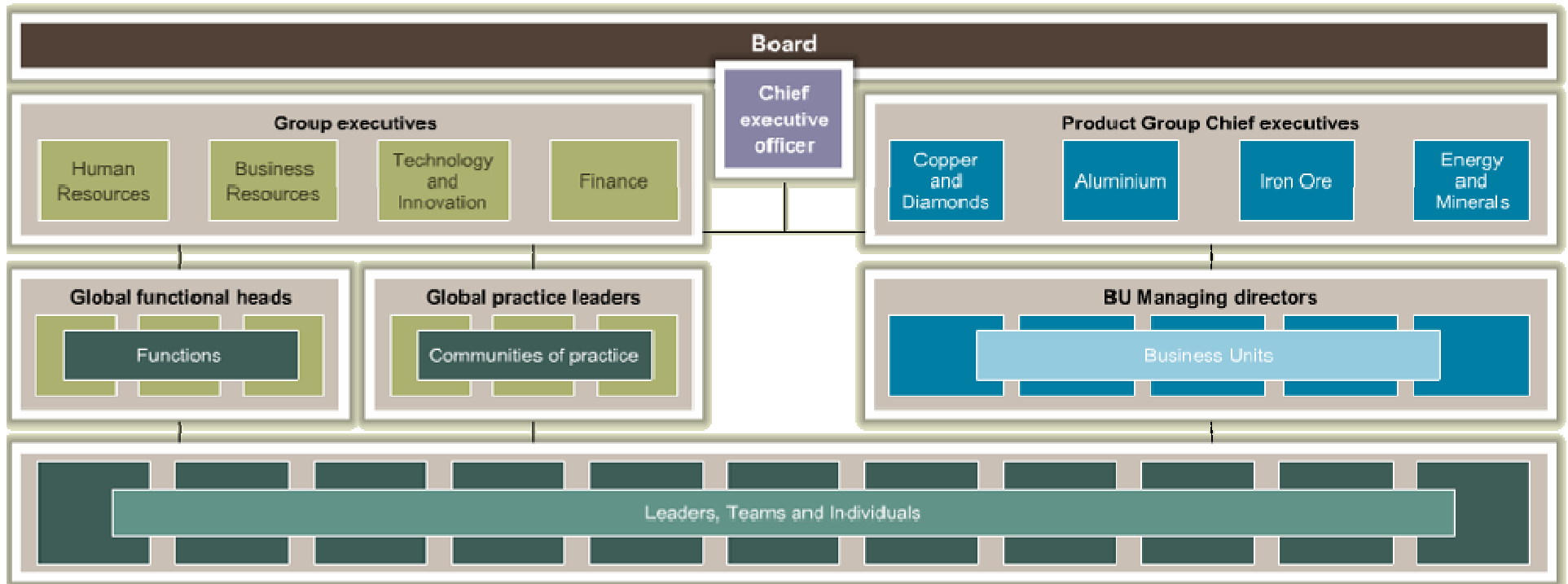


What's In A Name?

The greatest copper deposit ever found, at Rio Tinto in Spain, supplied the Roman Empire and gave its name to the company



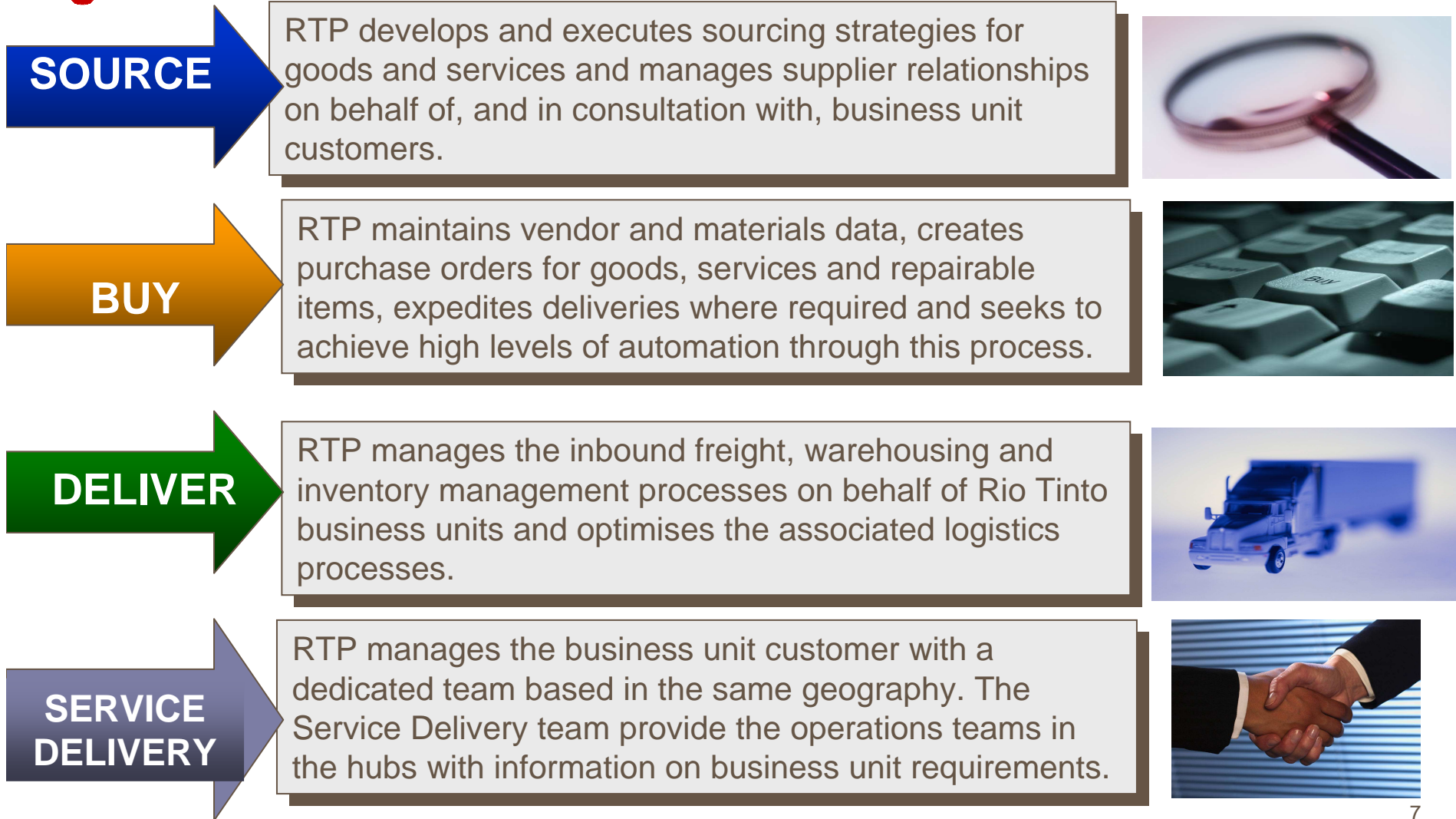
Organizational Structure



Location –Offices for hub personnel

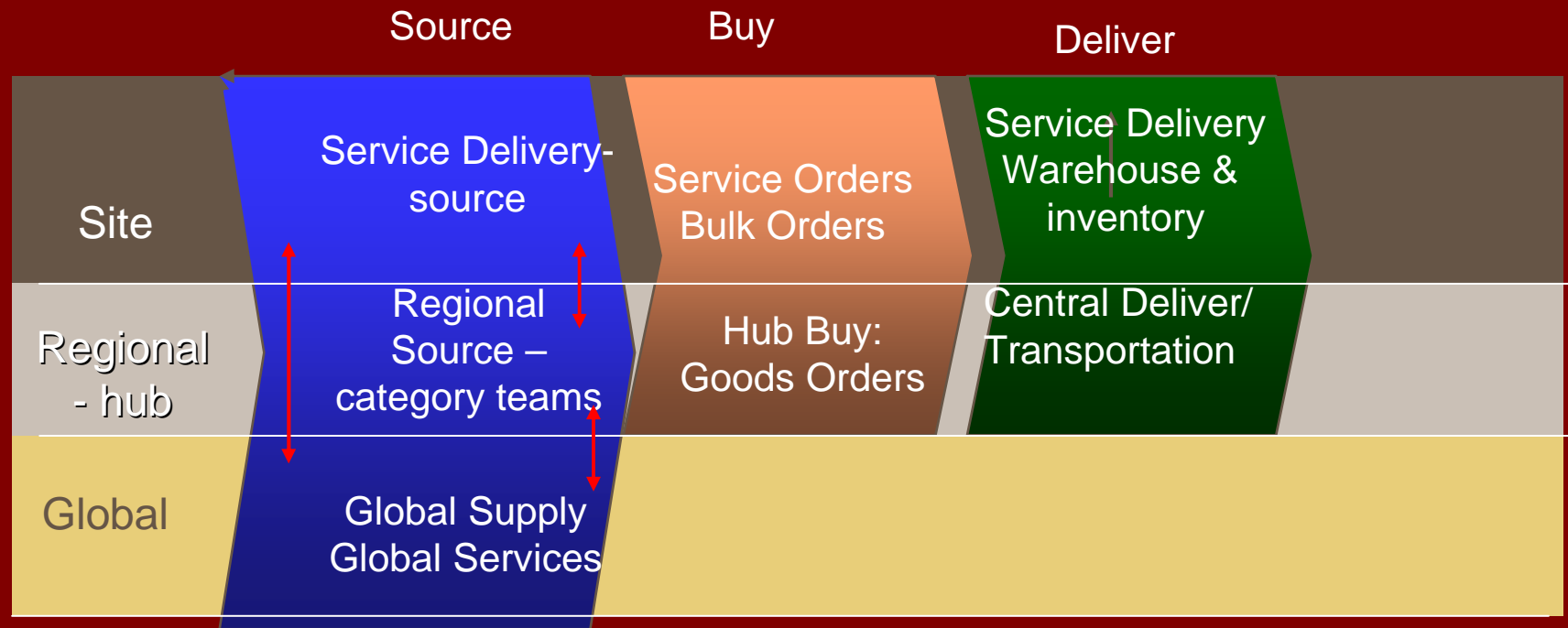


Functions within Rio Tinto Procurement

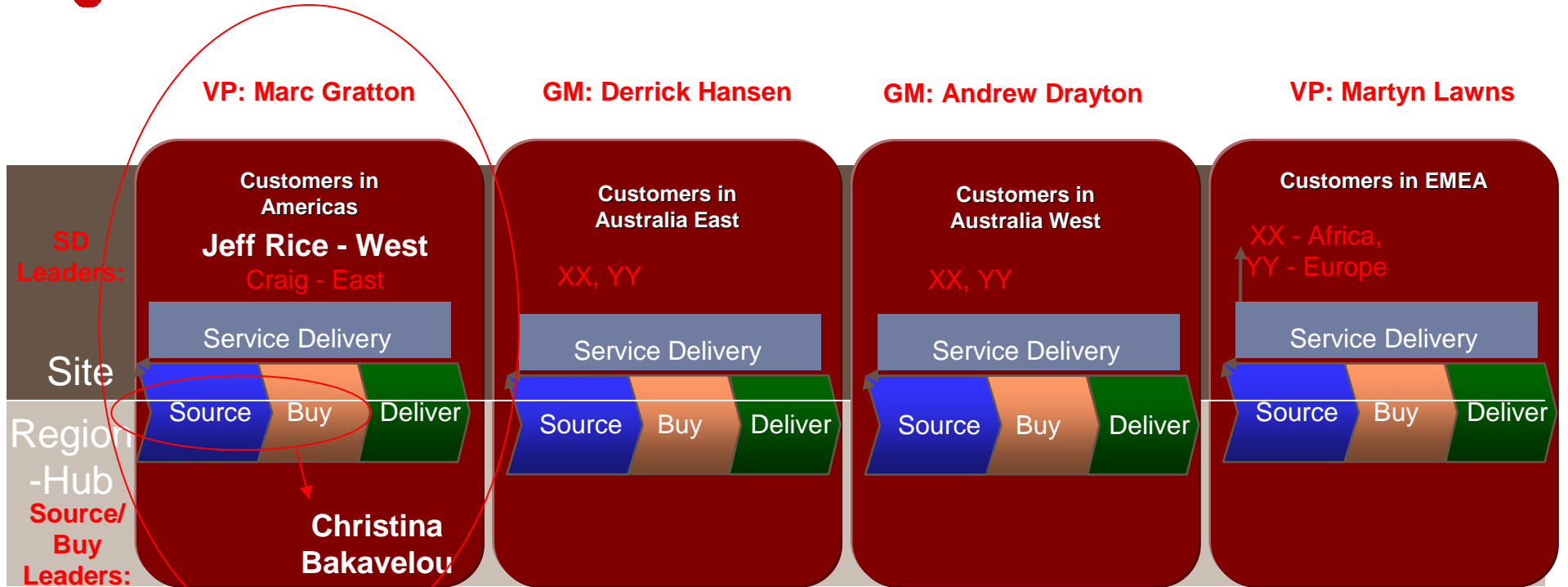


RTP Operating Model

Customer/Business Units and Functions/End Users

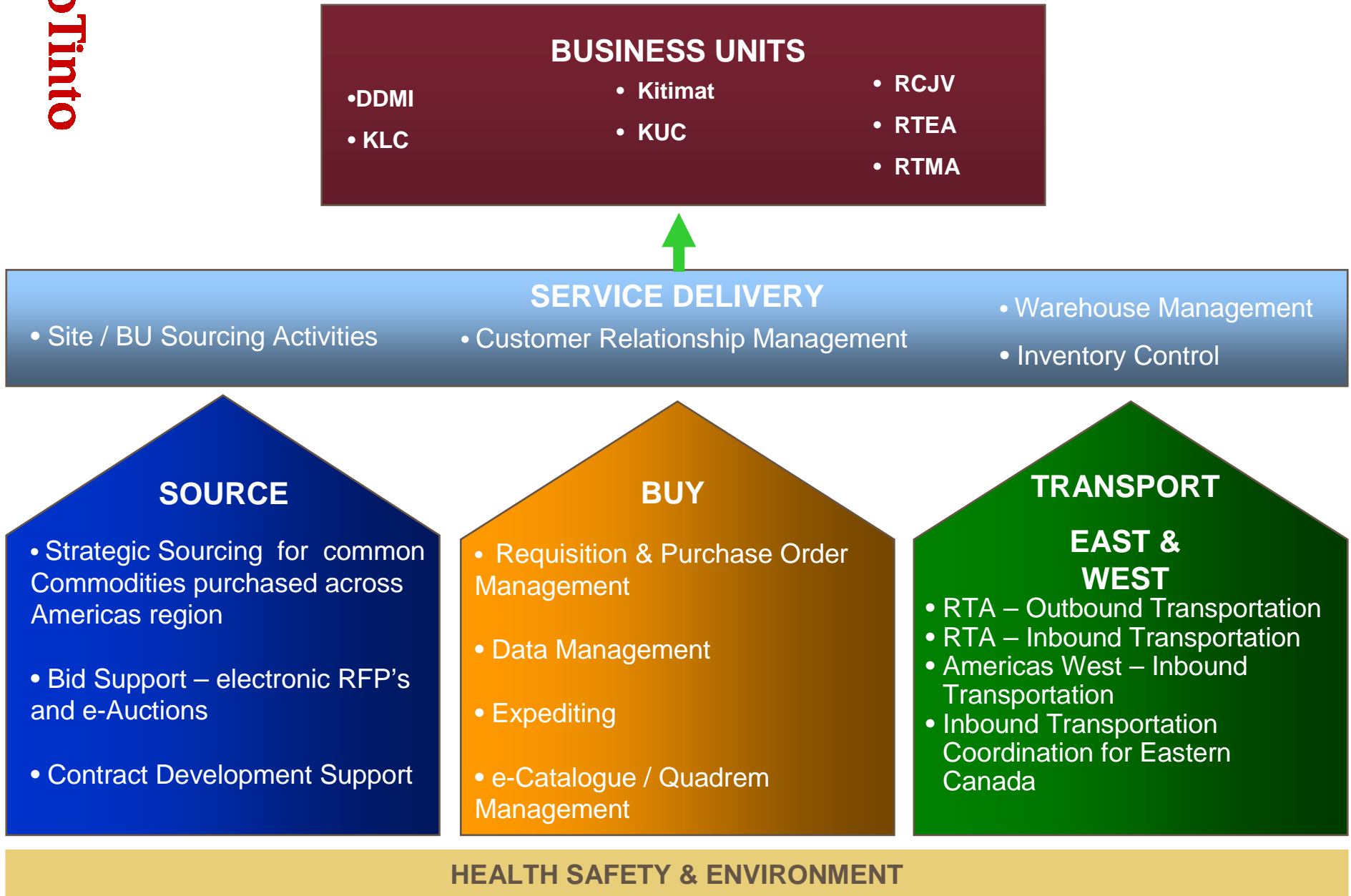


RTP Leadership



Global	Global Supply	Leader HME, Leader Chemicals, Leader Explosives, Leader Emerging Markets	GM: Alan Hustwick
	Global Services	Leader Professional Services, Leader IS&T	VP: Mark Matthew
	Project Procurement	Leader Aluminium, Leader Copper & Coal, Leader Iron Ore	GM: Peter McNamara

RTP Service Delivery West Model



RTP's Americas Source and Buy Teams

Hub category teams

Geographical and
Language coverage

Christina Bakavelou

Leader – Source and Buy

Buy

Transactional services

Language and
system coverage

Strategic Sourcing Mgr Robert Grenier

- Support all teams on TCO creation and sustainability
- No team assignments
- 2009 improvement work only in category management

Buy Mgr – East Francine Provencher

- Purchasing and Expediting
- Structured by commodity
- Data management
- Business Units:
 - RTA-Quebec N
 - RTA-Quebec S
 - RTA-Kitimat
 - QIT
 - IOC
 - RTCMI
- ERPs: Maximo, SAP(IOC)
- Quadrem lead-Americas
- Locations:
Montreal, Canada
Saguenay, Canada

Strategic Sourcing Mgr Jules D'Isep

- **Steel & Metallurgical** (grinding media, mill liners and wear plates, steel and manufactured products)
- **Process chemicals & process consumables** (industrial & welding gases, oxygen, lime, flocculants, ferro silicon, sulfuric acid, metallurgical coke)
- **Industrial Supplies** (filter media, HVAC parts, wire rope & slings, office supplies, printing & equipment, lab supplies)
- **Clothing, safety supplies**
- **Rail Equipment & parts**
- **Packaging**

Strategic Sourcing Mgr Francois Theoret

- Electrical
- Mechanical
- LME

Strategic Sourcing Mgr Bob Ekblad

- Mine Equipment & Parts HME parts (outside GS)
- Ancillary Services
- On-Site Maintenance
- Construction Services
- Facilities Management
- Project Procurement Support

Contracts & Systems Brian Hatch

- Source process
- Bid team
- Contracts analyst
- Contracts specialists
- Liaison with legal

Locations:
SLC, Utah
Montreal, Canada
Monterey, Mexico

Questions?

About Rio Tinto

Business Overview



Rio Tinto is one of the world's leading mining and exploration companies. We discover, mine, process and supply the metals and minerals that make modern life work.

We have had a hand in just about every product you use. Even if it's not mined and manufactured but grown and harvested, it probably reached you through an infrastructure made of metal.

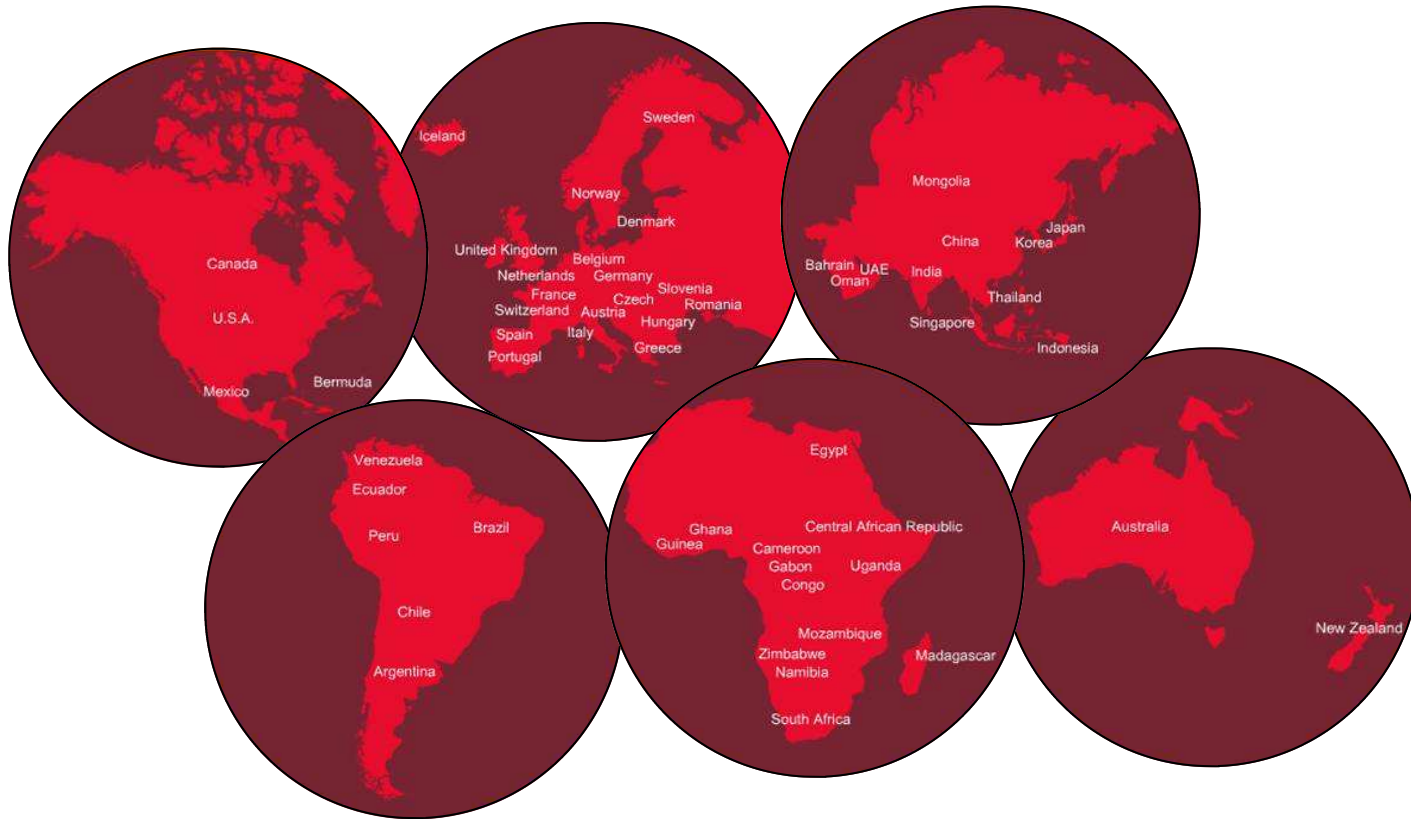
Wherever Rio Tinto operates, health and safety is our first priority.

About Rio Tinto

Business Overview

Rio Tinto is a global organization with diverse business interest

- We work in over 50 countries



About Rio Tinto

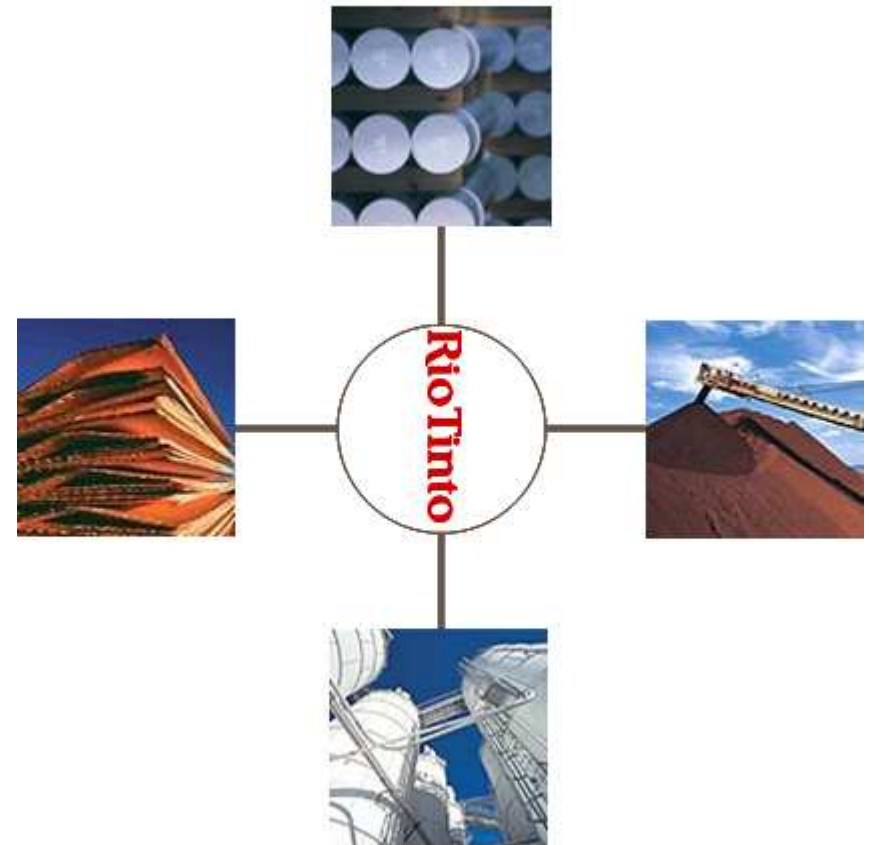
Business Overview

We organize ourselves into four product groups:

- Copper & Diamonds group
- Aluminum
- Iron Ore
- Energy & Minerals group

Supporting group functions:

- Human Resources
- Business Resources
- Technology & Innovation
- Finance



About Rio Tinto

Our vision and direction

- Rio Tinto has a clear vision for the future
- Our aim is to be the undisputed sector leader in value creation



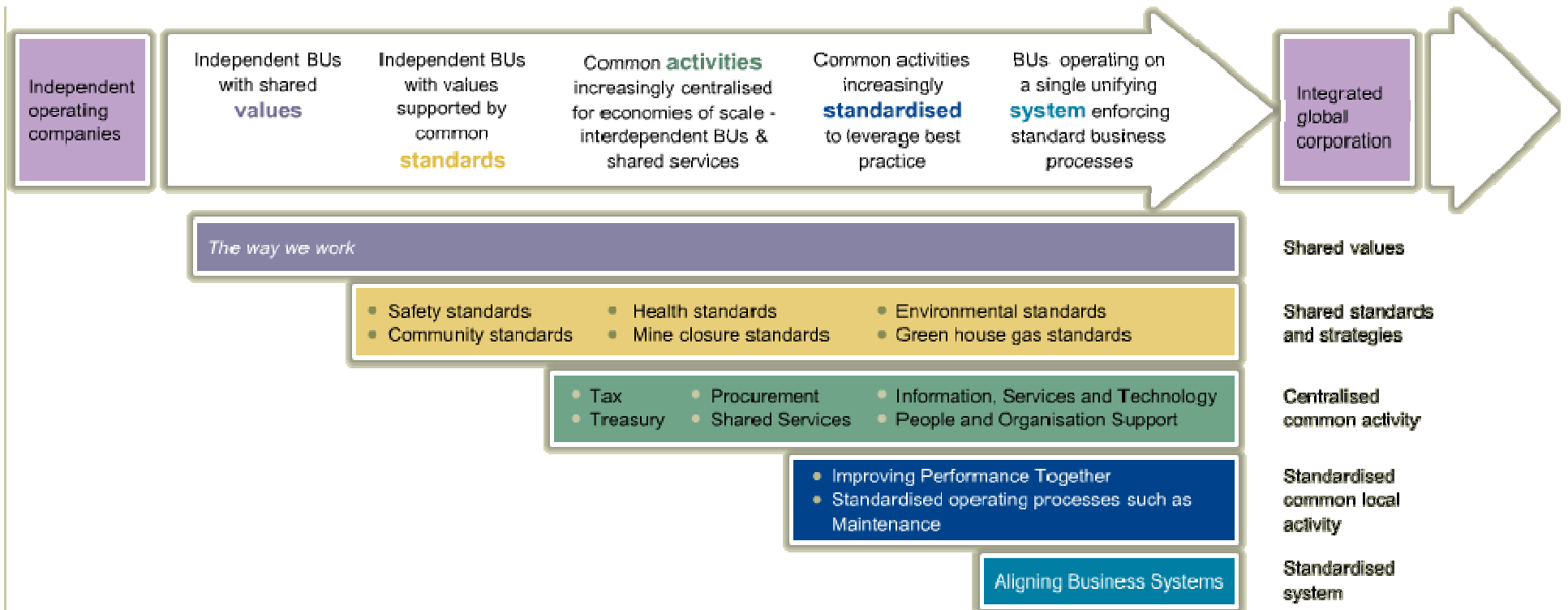
- Our operational performance is robust with strong safety leadership
- Rio Tinto is set up to maximize the sum of our parts
- We have the global processes, systems and culture to support value creation within our operations
- We are innovative, entrepreneurial developer and acquirer of value-creating assets
- Our corporate reputation is second to none
- We have a capable and supportive team of people

About Rio Tinto

Our vision and direction

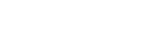
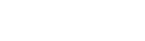
We have been on a journey towards this vision

Over the past 5+ years, we have, and continue to transition from a set of independently run Business Units (Bus) to an integrated global company



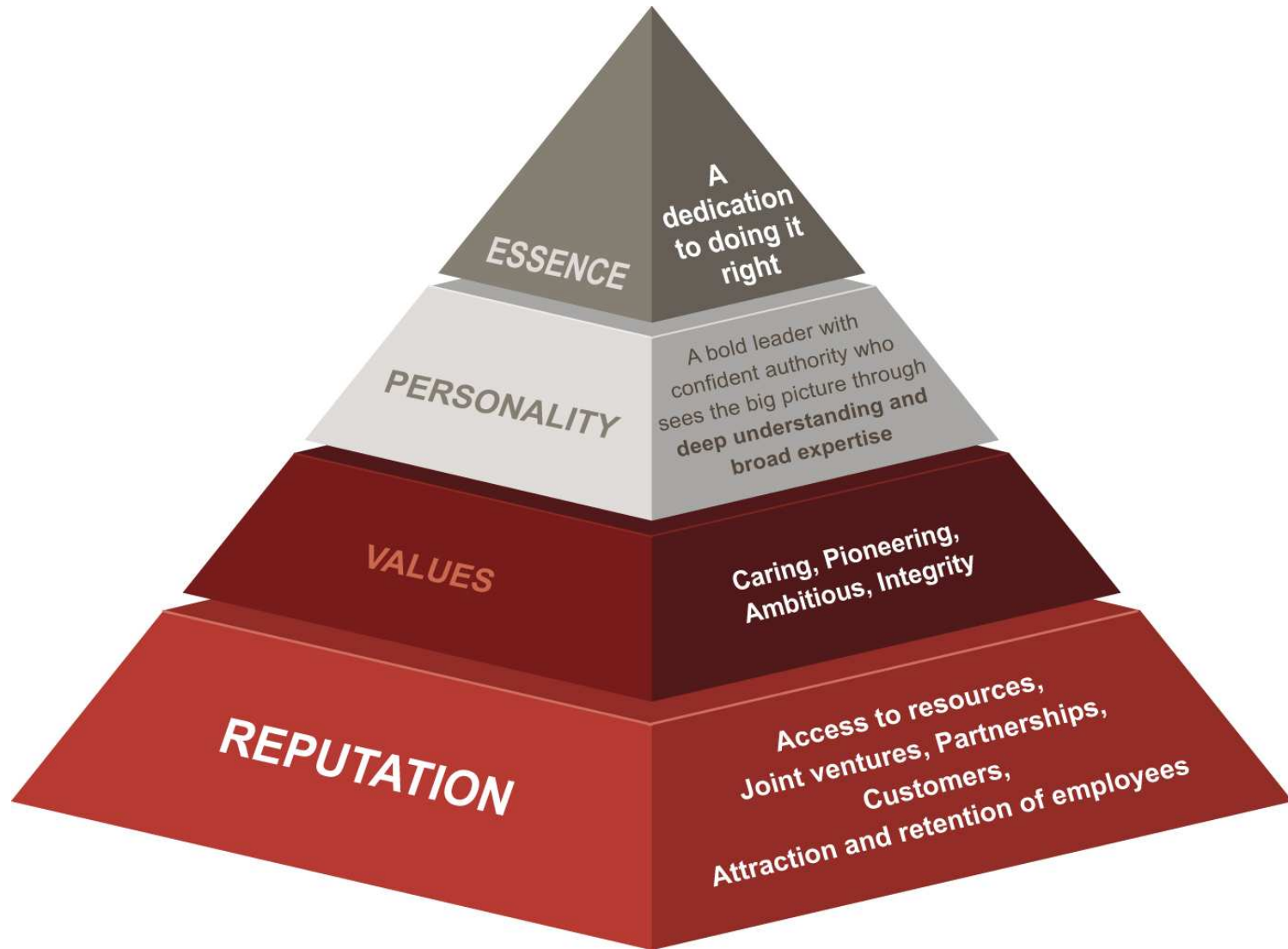
About Rio Tinto

Branding-Where we have been



About Rio Tinto

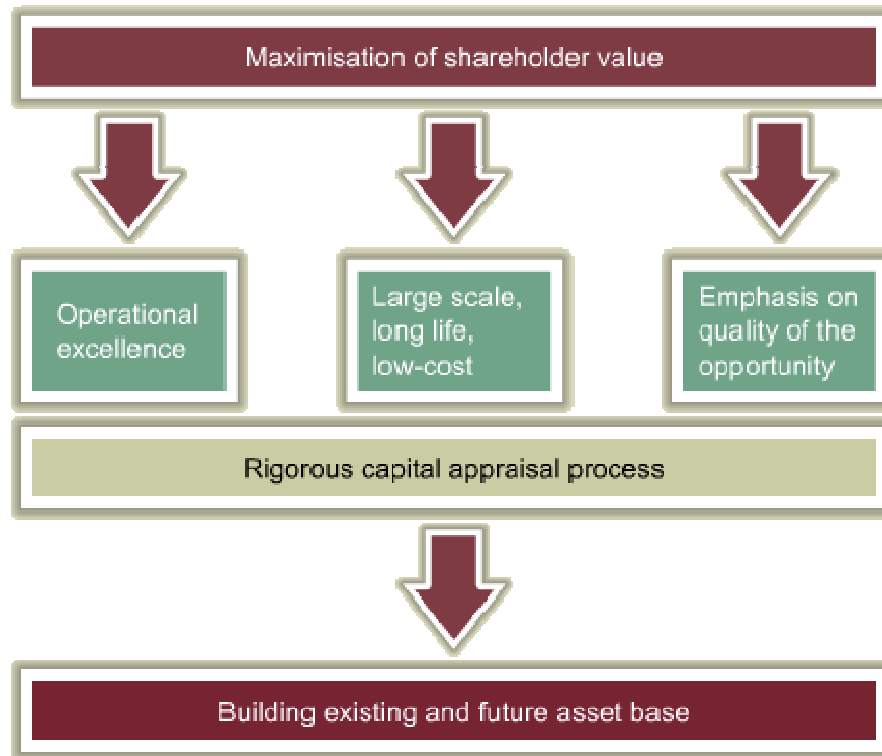
What our brand represents



About Rio Tinto

Our strategy and performance

We have a consistent and successful strategy which is illustrated below



We achieve our strategy through

- A strong commitment to safety
- A strong commitment to sustainable development
- Defining the point in the value chain where we want to position ourselves and ensuring we are operationally excellent
- A collaborative management philosophy
- Aiming to be the 'preferred developer' of mines in countries and communities where we operate

Rio Tinto

Health, Safety and Environment



Health, Safety & Environment

We have a strong commitment to health, safety and environment.
Our commitment to safety doesn't change.

Health	Safety	Environment
Covers occupational health and wellbeing of employees, and those we work with	Is a core value across the company and our aim is for everyone to go home safe and healthy at the end of each day	We want to leave the areas we disturb better than when we found them



Rio Tinto Corporate HSE Commitment

“We are totally committed to an injury and illness free workplace where everyone goes home safe and healthy each day”



Rio Tinto Corporate HSE Commitment

“With safety as a value, we all welcome being coached as well as offering coaching”

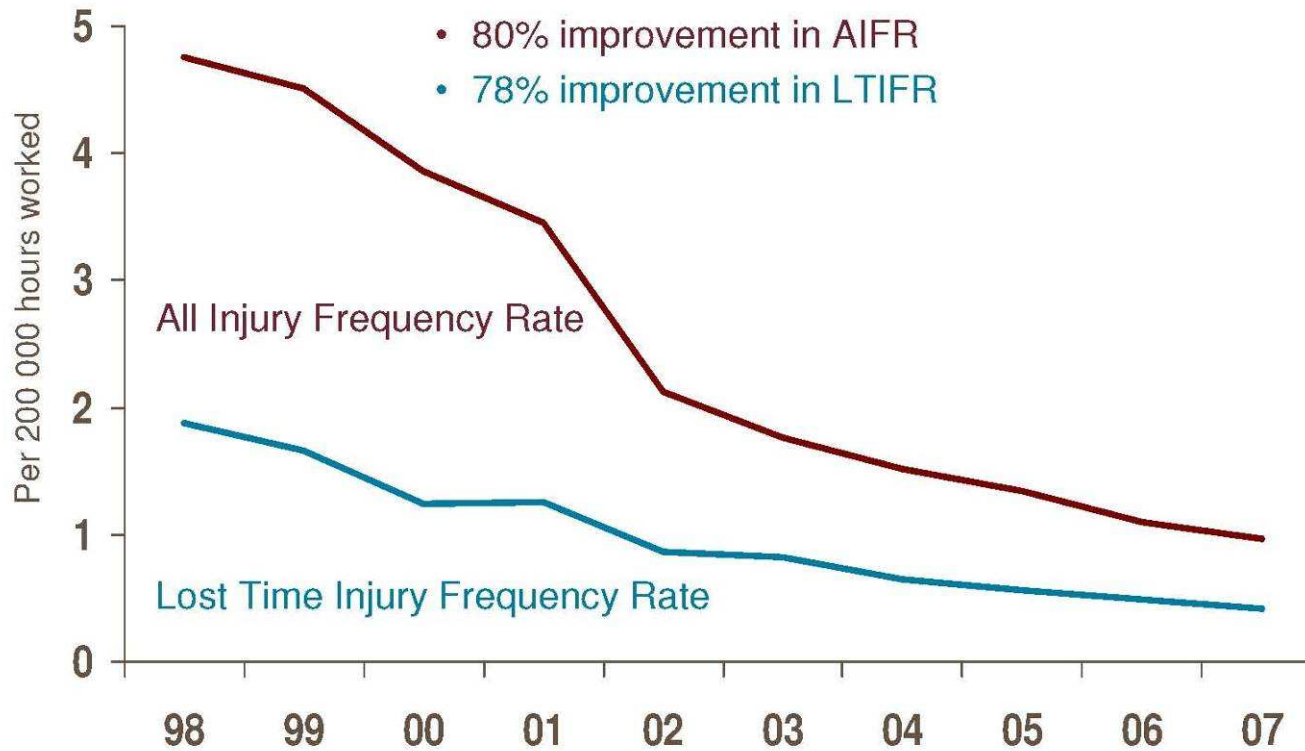
“Treating everyone with dignity and respect is essential in achieving an injury free workplace”

“We have committed ourselves to working and living safely.
We support our people in achieving an injury and illness free Workplace”



Rio Tinto Group Incident Trend

Decline in injury frequency rates 1998 - 2007



Source: Rio Tinto. Data excludes Alcan.



The Way We Work – Health

“We strive to protect our physical health and well being in the workplace”



The Way We Work – Safety

“Safety is a core value and a major priority; our goal is zero injuries”

We are building a supportive safety culture that requires:

- Visible leadership
- Ongoing education and training
- A high level of participation by everyone in the workplace



The Way We Work – Environment

“Wherever possible we prevent, or otherwise minimize, mitigate and remediate, harmful effects of the Group’s operations on the environment”



Your Actions

- Your safety is best determined by your actions
- Your going home safe and healthy each day depends upon how attentive you are to protecting yourself
- Speak up
- Your safety affects you, your family, the company, and the community.



Safety Rules

- Maintain Good Housekeeping
- Report any injury, unsafe equipment or hazardous conditions to your supervisor immediately
- Know where the first aid kit is located
- Know the evacuation route
- KEEP SAFETY FIRST



Goals

- Zero injuries, illnesses and incidents
- Ensuring that all team members recognize that nothing is more important than the health and safety of our people
- Providing all team members with a safe and healthy workplace

Your personal target is to **be incident free**

